



artwork by Margaret Owens

"Not all those who wander are lost." - J. R. R. Tolkien

Mission...

"To promote the Strait of Juan de Fuca Highway 112 Scenic Byway."

We welcome your participation in the Juan de Fuca Scenic Byway Association or projects that may be developed from community input. Please contact Michelle Little at 360.417.1301 or email michelledlittle@gmail.com if you would like to volunteer, need some information, or have questions or concerns.

News from the Association...

The Olympic Peninsula Tourism Summit was held in October 2013, bringing good news and great excitement for the representatives from the JFSBA that attended. The UK Travel Channel has filmed an hour long segment on the Olympic Peninsula that will air for the next 5 years in 114 countries and 5 languages. The best free advertising one could imagine!

The January 2014 JFSBA board meeting included the election of board members and officers.

Joe Murray, President	Alex Stevens, Vice President
Sande Balch, Secretary and Interim Treas.	Michelle Little, Grant Coordinator
Bud Denny	Margaret Owens
George Eastman	Ali Baker
Diane Schostak	Carolyn Flint

A special welcome to George Eastman, also a new association member, for accepting his nomination and election to the board for a 3 year term.

Byway Projects/Telling the Story

Pillar Point Kiosk - We are close to the final installment of the 2008 association grant. Interpretive panels will be installed at Pillar Point illustrating the history of Hwy 112 and explaining Historical Logging Terms.

Many thanks to the Clallam County Parks Department for partnering with the JFSBA on this project and for developing and installing the panels.

Elwha Gateway Interpretive Project - The commemorative booklet is in its final stages and due out this year. Design of the interpretive panels has started and the interpretive center building should be out for bid in the next few weeks. The center will be approximately 30 feet square and sited at the Elwha Overlook just east of the Elwha Bridge on Hwy112. Completion is anticipated in late August or early September.

www.highway112.org! Available to members; you may now advertise and/or have a member exclusive web page for your business added to the scenic byway www.highway112.org web site. Rates:

Community Members: Web pages are not available.
Associate and Sponsor members: \$25 to set up and \$10 annually.
Platinum Members: No Charge for set up or annual fees.

Annual fees for the web pages will run one year from the date the page is activated and renewal is due by the 1st anniversary of that date. Templates are provided to make creating your web page a simple process.

Web Site Advertising Discounts:
Community Members: no discount
Associate Members: 10% discount
Sponsor Members: 25% discount
Platinum Members: 35% discount

Contact Sande Balch or Michelle Little for the advertising base rate. Because we are a non-profit association, these extremely low rates are one of the best advertising investments your business can make.

What's Happening...

April

Juan de Fuca Scenic Byway Association Meeting, The meeting will be at 5PM Monday, April 28 in Clallam Bay at the Sunsets West Co-op.

Salt Creek Saloon and Grill is open at the corner of Hwy 112 and Camp Hayden Road.

Hosts: Jon and Cheryl Koenig

May

The Sekiu Fly-In is scheduled for May 26 this year. More information may be obtained from:

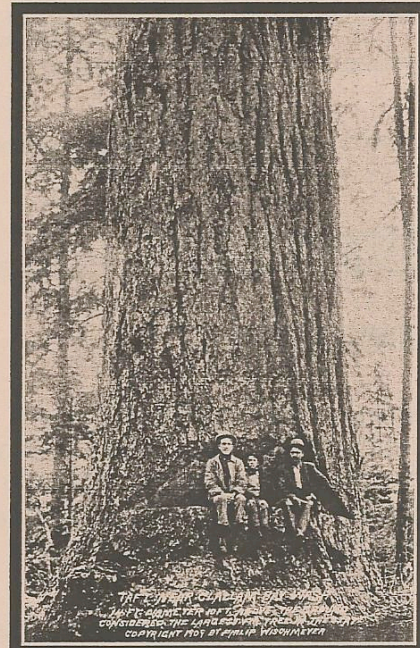
Gary Fernandez (360) 963-2485

June

The annual Duck Derby is coming. Please make your duck purchases from the association. It is an important fundraiser for us.

The Sekiu Halibut Derby usually takes place some time in June...stay tuned!

The Taft Fir



Does anyone know where this tree was? If you do, please let us know!

On the Strait and Narrow

Membership 2014

Sponsor Members

Bruce Skinner and Associates
Salt Creek RV and Golf
Clallam Bay-Seki Chamber of Commerce
Linda's Wood-fired Kitchen and Apocolypto Motel
Weel Road Deli and Espresso

Elwha Dam RV Park
Olympic Peninsula Visitor Bureau
Chito Beach Resort
Washburn's

Sande Balch
Family Kitchen
Angel Crest Gardens
Merrill and Ring

Associate Members

Joyce General Store
George Eastman
American Legion Riders Post 29
Strait Shots Espresso
Hobuck Beach Campground/Resort
Van Ripper's Resort
The Cape Motel and RV Park
Michelle Little
Olympic Raft and Kayak

Sunsets West Cooperative
CresComm WiFi LLC
Carol Schultz Realtor and Notary
Makah Cultural and Research Center
Bay Motel
Makah Marina/Port of Neah Bay
Makah Mini-Mart and Fuel
Robert and Charlene Engel
Bob and Jo Norton

Considerations
Straitside Resort
Bullman Beach Inn
Straitview Self Storage
Warm House Restaurant
By the Bay Cafe
Compass Rose
Makah Tribe

Community Members

Clallam County Parks/Fair/Facilities
Joyce Headquarters Salon and Barber
Joyce Coin-Operated Laundry
C&S Pruning/Orchard Care/Custom Milling
Crescent Beach and RV Park
Angler's Hideaway
Breakwater Restaurant
Gary's Pay and Save
The Lost Resort at Lake Ozette
Cedar Shack Espresso
Raven's Corner
Patti's Property Management
Ray's Grocery

Tidepool Tile
Joyce Trailer Court
Ruth Hunt/Avon rep
The Dreamer's Woods LLC
Alex Stevens
Winter Summer Inn
Crescent Community Advisory Council
Curley's Resort and Dive Center
Snow Creek Resort
Droogee's Drums and Makah Art
Take Home Fish Co.
Mike Doherty

Joyce Fitness Center
Blackberry Café
Joyce Depot Museum
Cozy Overnight Cottage
Loren Kreutner
Three Sisters of Clallam
Jack Mackerel Seafood
Brian Adler
Have Adze Will Travel
Ozett Associates LLC
Olson's Resort
Cain's Auto and Marine

Always Happening

On the Makah Nation - Makah Museum, Neah Bay

Open 10 am to 5 pm - 7
days a week year round,
except for New Year's
Day, Thanksgiving and
Christmas

<http://makahmuseum.com/>

Clallam Bay Visitor Center

April – November
Daily 10AM – 5PM

November – April
Open Intermittently

http://www.sekiu.com/stay_here/visitor_center.php

Joyce Depot Museum

Winter (Labor Day to
Memorial Day):
Saturdays 10AM – 4PM
Summer (Memorial Day
to Labor Day): Monday,
Thursday, Friday,
Saturday 10AM – 4PM

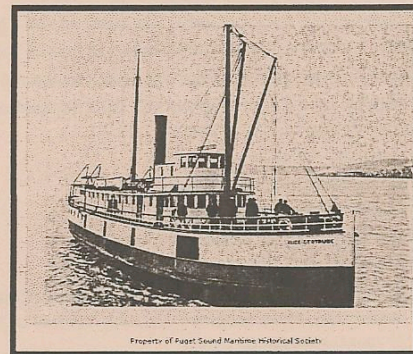
The 2014 Milepost Business Directory printing is complete and copies are now available for distribution.



About Membership

Are you interested in becoming a member? There are many benefits including a listing in a printed Milepost Business Directory and on the website. The directory is used to connect the communities along Hwy 112 and it is a valuable resource to travelers, residents and business owners.

Contact Sande Balch at sandrabalch@olympen.com or Michelle Little at michelledlittle@gmail.com for more details.



M/V Alice Gertrude – Misquito Fleet